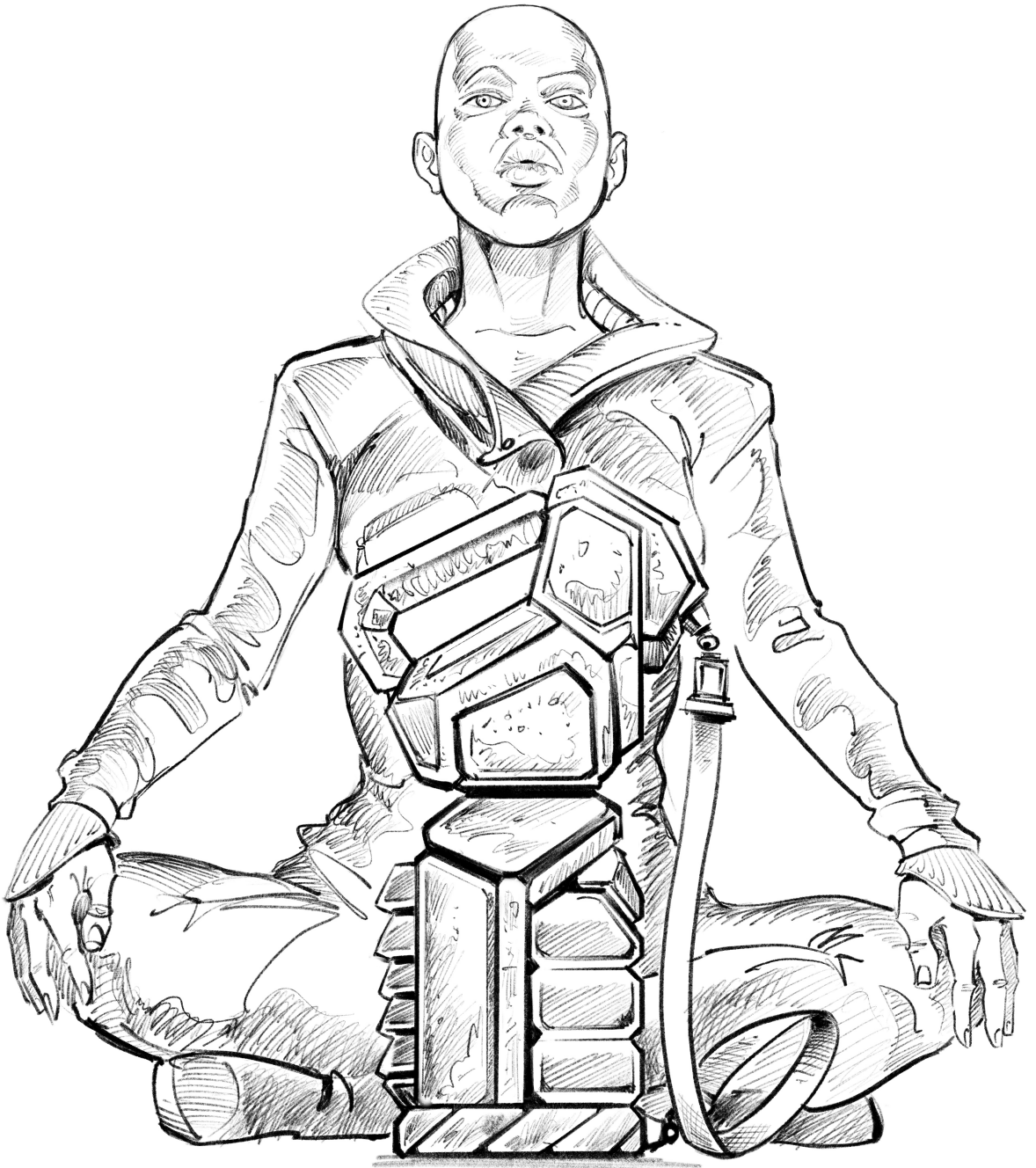


THE MAKING OF TECH



EARLY NOTES



DESIGN COOL
CASES FOR
THE MODULES

She escapes from police custody, chases,
at the last minute saves by another
gang ... who propose she join them
on a run of the gang that supposedly
kills her father.

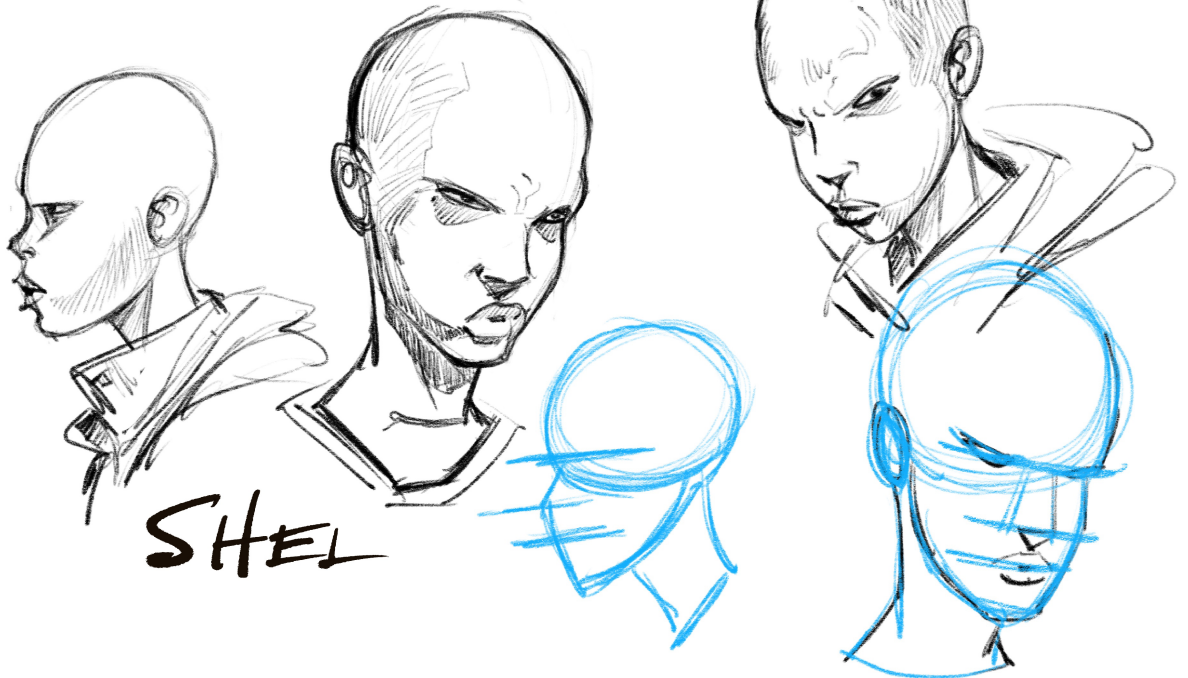
ONLY PROBLEM - THE GANG IS UNTRUSTWORTHY
THE MODULE IS WEAPON GADGET TECH ...

BUT HER KING'S FUTURE IS AT
STAKE.

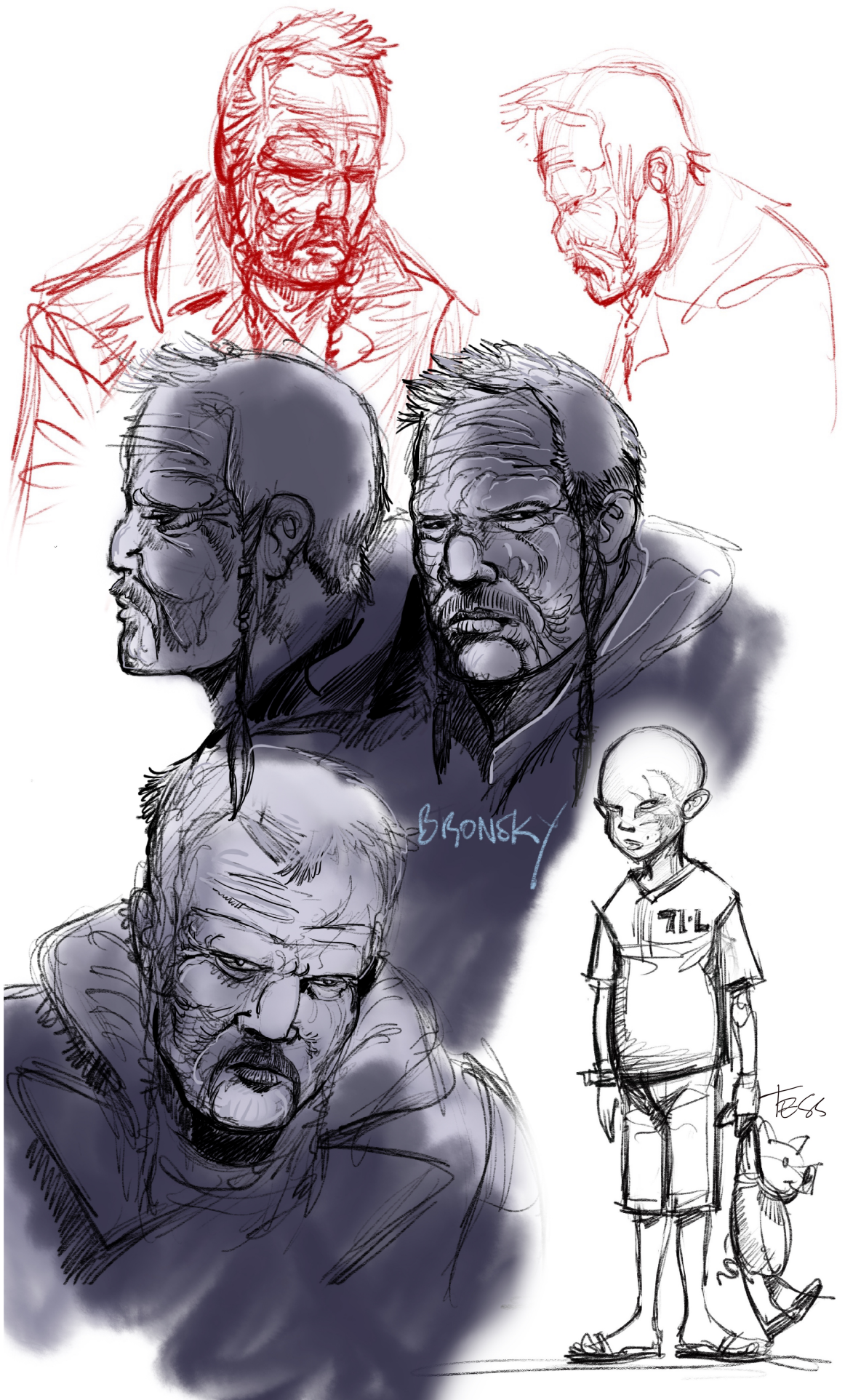
AFTER BLOODY HOST GONE WRONG SHE FLEES
BUT IT WAS A SET UP - BY HER
OLD MENTOR WHO IS NOT DEAD.



CHARACTER DESIGN

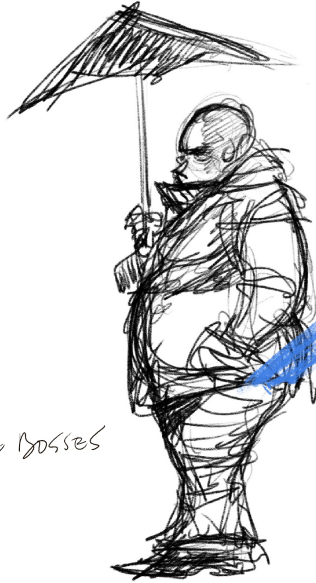


SHEL

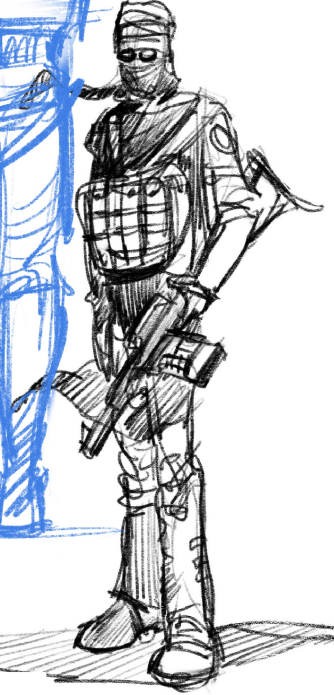


BRONSKY

FESS

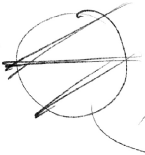


The Bosses



Transport Driver

The Sharp



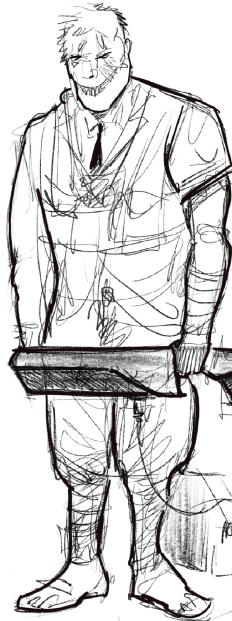
KULKAN



YAM



MAZE

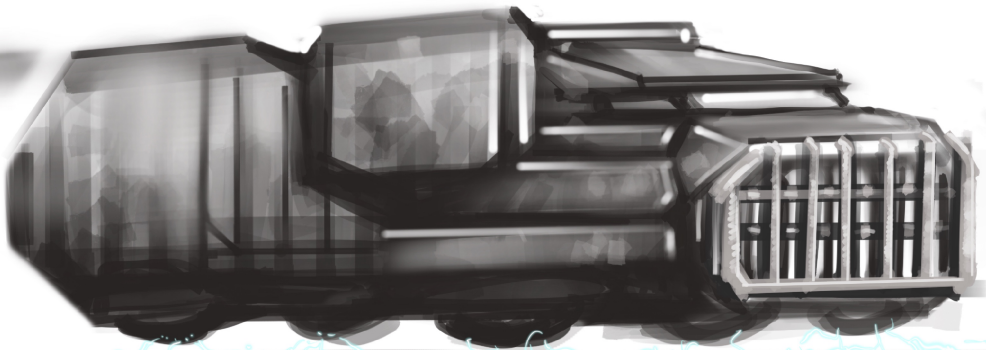
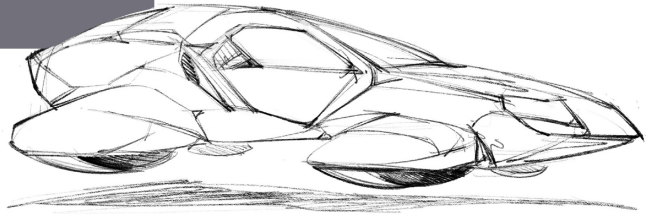
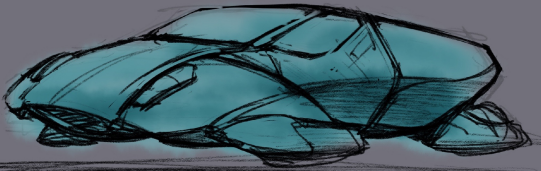
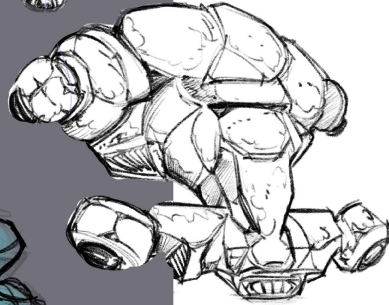
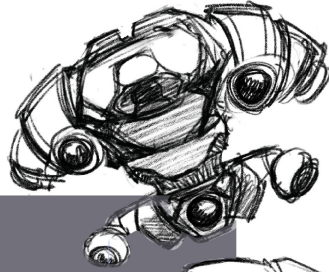
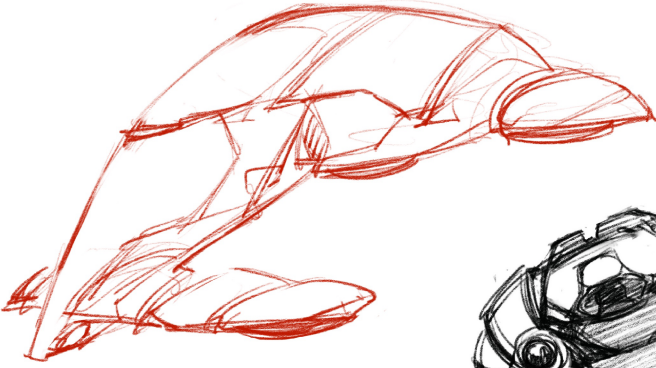


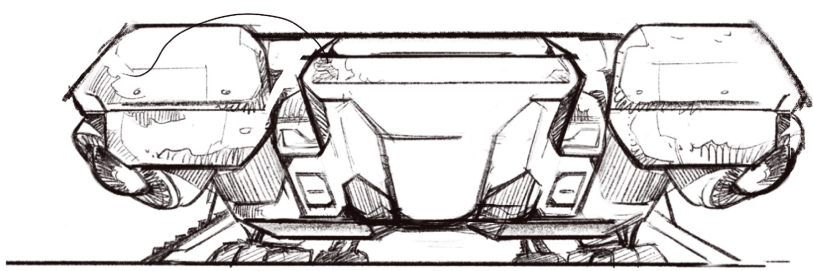
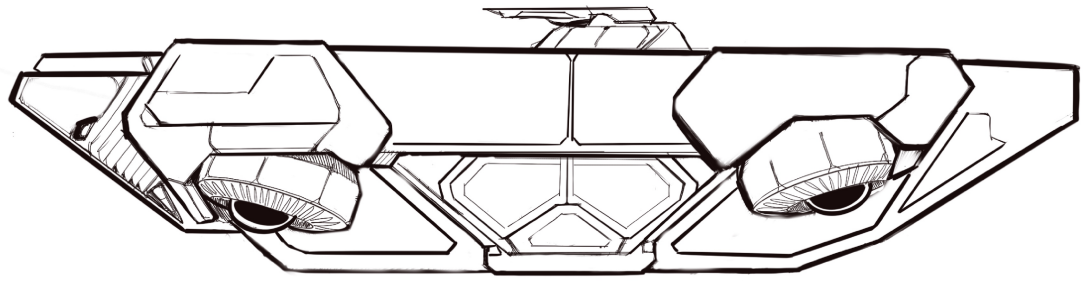
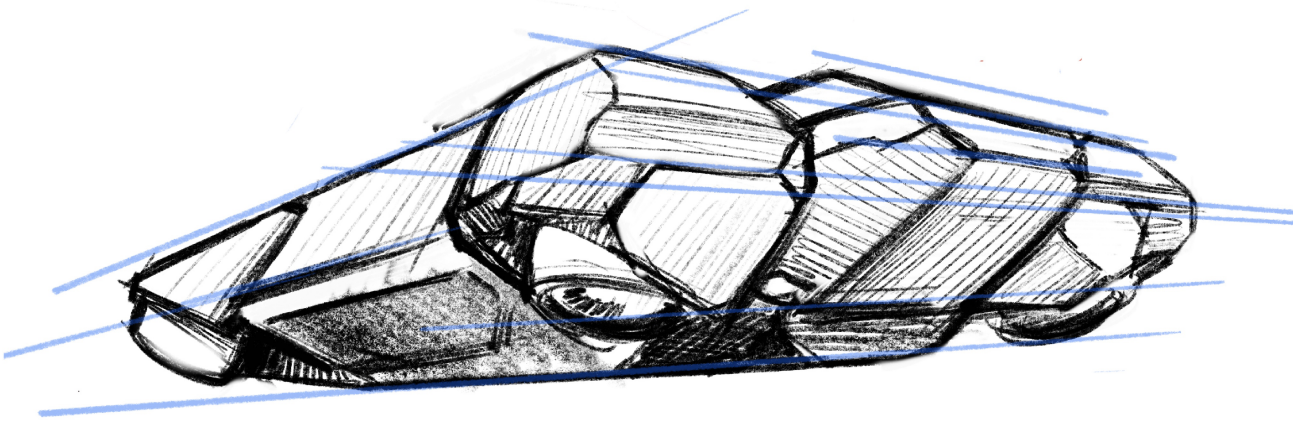
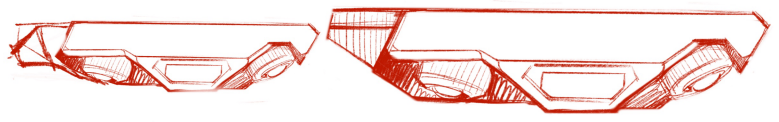
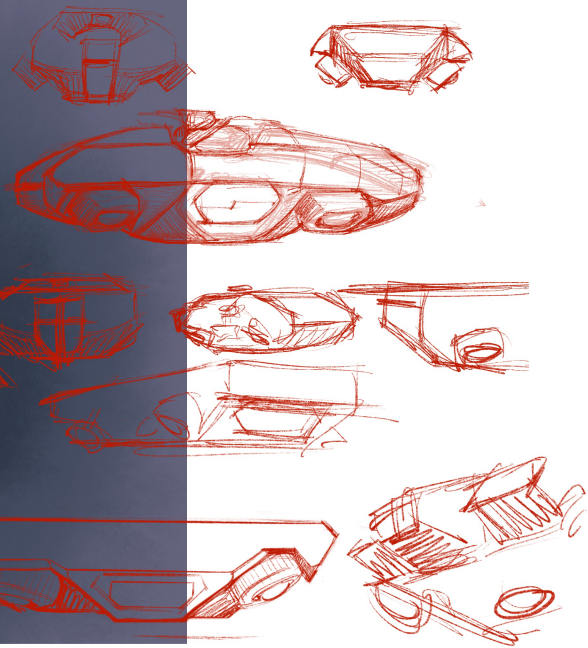
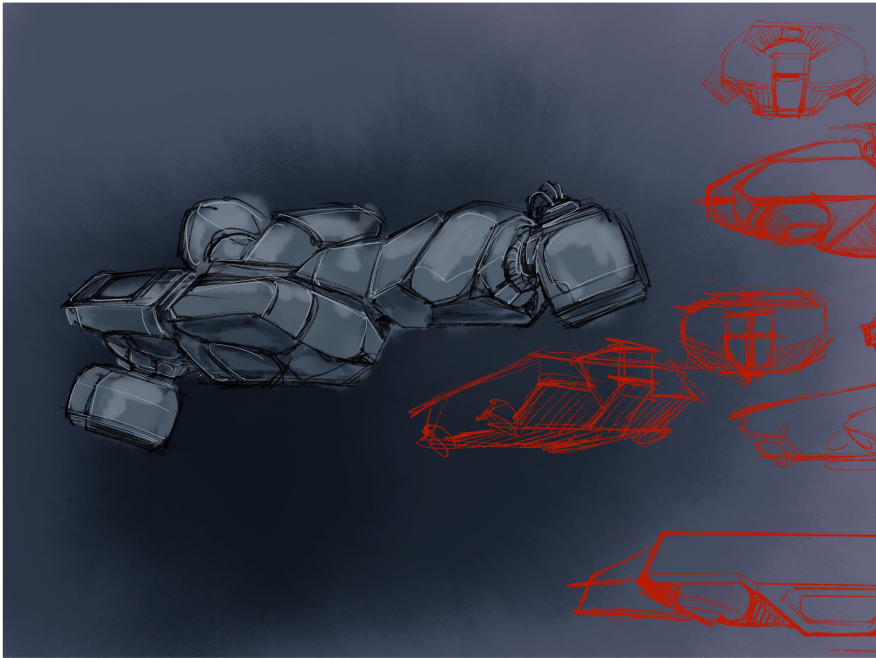
CHAAC

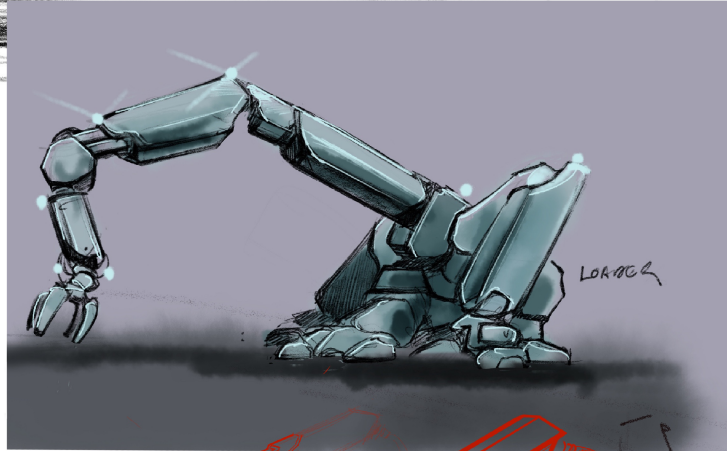
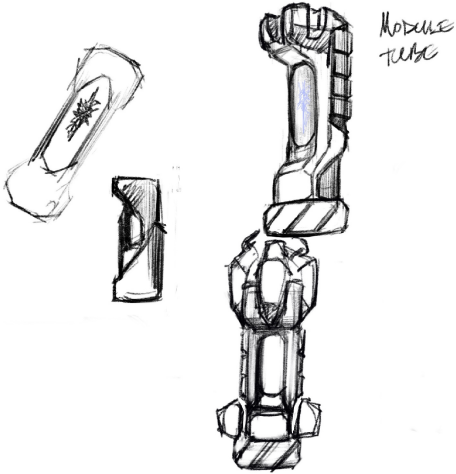


IX

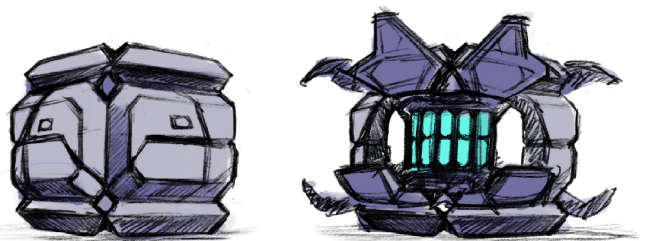
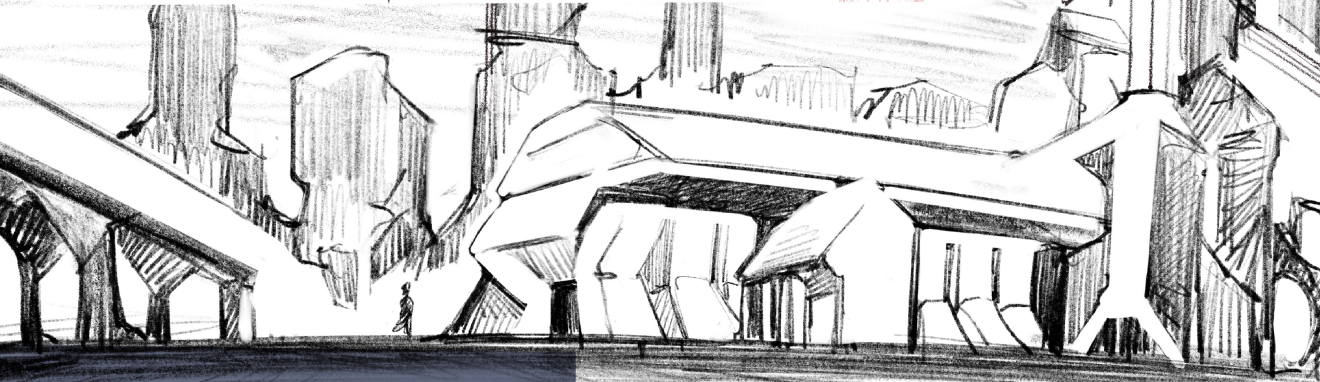
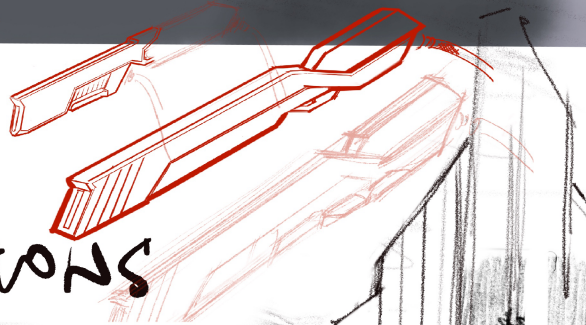
VEHICLES







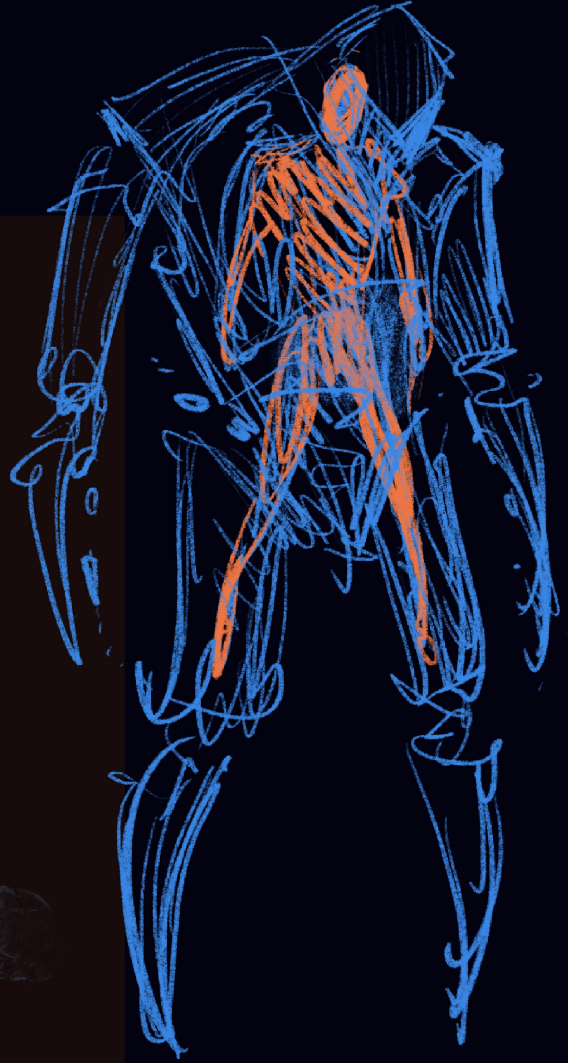
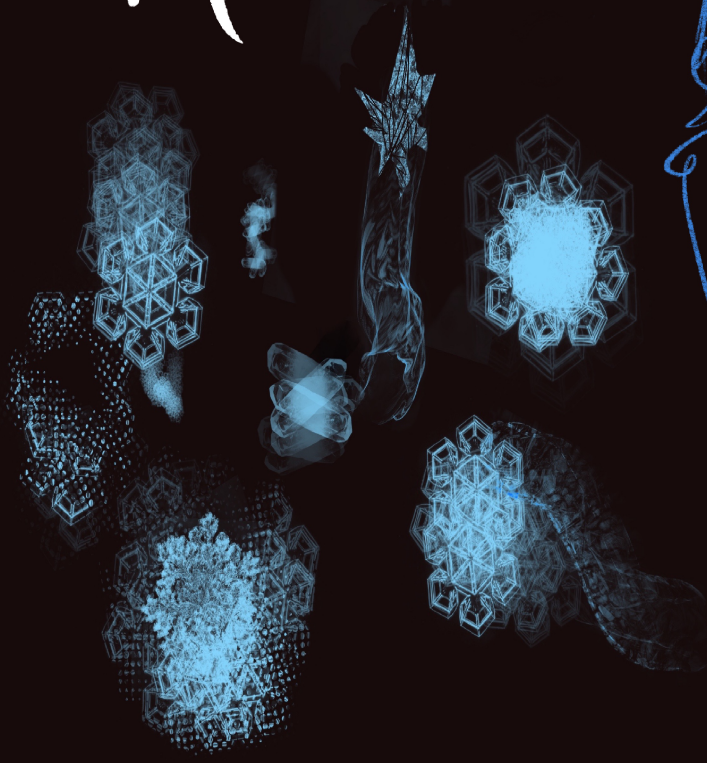
PROPS & LOCATIONS



CLARK MODULE



MODULES



PAGE CONSTRUCTION

